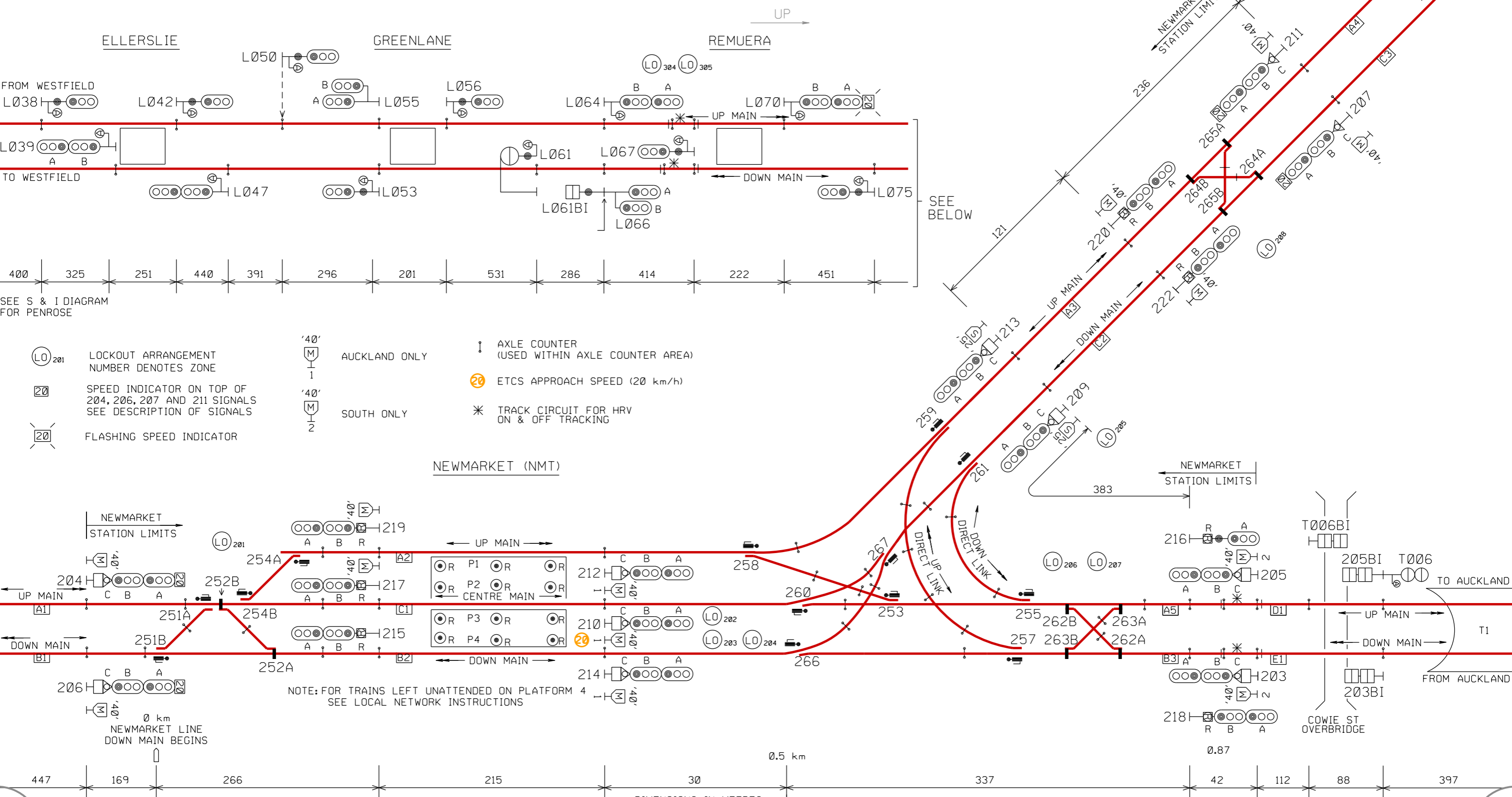


NEWMARKET

SIGNALLING & INTERLOCKING ARRANGEMENTS

THESE ARRANGEMENTS WILL BE BROUGHT INTO USE AT A TIME AND DATE TO BE ADVISED BY SEMI-PERMANENT BULLETIN.
THIS CANCELS S&I No. 3396
THESE TO BE COMPLETED BY THE RECIPIENT OF THE S & I DIAGRAM



SEE S & I DIAGRAM FOR PENROSE

SEE BELOW

- LO 201 LOCKOUT ARRANGEMENT NUMBER DENOTES ZONE
- 20 SPEED INDICATOR ON TOP OF 204, 206, 207 AND 211 SIGNALS SEE DESCRIPTION OF SIGNALS
- 20 FLASHING SPEED INDICATOR

- 40' AUCKLAND ONLY
- 40' SOUTH ONLY
- AXLE COUNTER (USED WITHIN AXLE COUNTER AREA)
- ETCS APPROACH SPEED (20 km/h)
- TRACK CIRCUIT FOR HRV ON & OFF TRACKING

NEWMARKET (NMT)

NOTE: FOR TRAINS LEFT UNATTENDED ON PLATFORM 4 SEE LOCAL NETWORK INSTRUCTIONS

NOTE: THIS IS A COLOUR DIAGRAM
RED LINES INDICATE ROUTE AVAILABLE FOR ELECTRIC TRAINS

SEE SHEET TWO FOR DESCRIPTION OF SIGNALS

PRINTED COPIES OF THIS DOCUMENT ARE UNCONTROLLED

DIMENSIONS IN METRES

NEWMARKET LINE
UP MAIN BEGINS

ALL MAIN SIGNALS FITTED WITH ETCS
ALL 'A' LIGHTS WILL BE NORMALLY EXTINGUISHED


SEE S & I DIAGRAM FOR AUCKLAND

P. R. KING
SENIOR SIGNALS ENGINEER

NEWMARKET

SIGNALLING & INTERLOCKING ARRANGEMENTS

DESCRIPTION OF SIGNALS

203ABC	DOWN HOME FROM E1	NORMAL SPEED TO B2 MEDIUM SPEED TO C1, A2, A3 OR C2 LOW SPEED TO B2, C1, A2, A3 OR C2
204ABC	UP HOME FROM A1	NORMAL SPEED TO C1 # NORMAL SPEED (20 km/h) TO C1 MEDIUM SPEED TO A2 OR B2 # MEDIUM SPEED (20 km/h) TO A2 OR B2 LOW SPEED TO A2, C1 OR B2
205ABC	DOWN HOME FROM D1	NORMAL SPEED TO C1 MEDIUM SPEED TO B2, A2, A3 OR C2 LOW SPEED TO B2, C1, A2, A3 OR C2
206ABC	UP HOME FROM B1	NORMAL SPEED TO B2 MEDIUM SPEED TO A2 OR C1 # MEDIUM SPEED (20 km/h) TO 210, 212 OR 214 LOW SPEED TO A2, C1 OR B2
207ABC	DOWN HOME FROM C3	NORMAL SPEED TO C2 WHEN 209 IS OFF MEDIUM SPEED TO A3 WHEN 213 IS OFF # MEDIUM SPEED (20 km/h) TO 209 OR 213 LOW SPEED TO C2 OR A3
209ABC	DOWN DIRECTING FROM C2	NORMAL SPEED TO B2 MEDIUM SPEED TO A5, B3 OR C1 LOW SPEED TO A5, B3, C1 OR B2
210ABC	 UP DIRECTING FROM C1	NORMAL SPEED TO A5 MEDIUM SPEED TO B3 OR C2 LOW SPEED TO A5, B3 OR C2
211ABC	DOWN HOME FROM A4	NORMAL SPEED TO A3 WHEN 213 IS OFF MEDIUM SPEED TO C2 WHEN 209 IS OFF # MEDIUM SPEED (20 km/h) TO 209 OR 213 LOW SPEED TO A3 OR C2
212ABC	UP DIRECTING FROM A2	NORMAL SPEED TO A5 MEDIUM SPEED TO A3 OR B3 LOW SPEED TO A3, A5 OR B3
213ABC	DOWN DIRECTING FROM A3	NORMAL SPEED TO A2 MEDIUM SPEED TO A5 OR B3 LOW SPEED TO A2, A5 OR B3
214ABC	UP DIRECTING FROM B2	NORMAL SPEED TO B3 MEDIUM SPEED TO A5 OR C2 LOW SPEED TO A5, B3 OR C2
215ABR	DOWN DEPARTURE FROM B2	NORMAL SPEED TO B1 MEDIUM SPEED TO A1 RESTRICTED SPEED TO A1 OR B1
216AR	UP DEPARTURE FROM A5	NORMAL SPEED TO D1 RESTRICTED SPEED TO D1
217ABR	DOWN DEPARTURE FROM C1	NORMAL SPEED TO A1 MEDIUM SPEED TO B1 RESTRICTED SPEED TO A1 OR B1
218ABR	UP DEPARTURE FROM B3	NORMAL SPEED TO E1 RESTRICTED SPEED TO E1
219ABR	DOWN DEPARTURE FROM A2	MEDIUM SPEED TO A1 OR B1 RESTRICTED SPEED TO A1 OR B1
220ABR	UP DEPARTURE FROM A3	NORMAL SPEED TO A4 MEDIUM SPEED TO C3 RESTRICTED SPEED TO A4 OR C3
222ABR	UP DEPARTURE FROM C2	NORMAL SPEED TO C3 MEDIUM SPEED TO A4 RESTRICTED SPEED TO A4 OR C3

ROUTE INDICATOR DISPLAYS

DISPLAY	ROUTE SET TO	ROAD
PU	UP MAIN	A2
PC	CENTRE MAIN	C1
PD	DOWN MAIN	B2
WU	UP MAIN (WEST)	A3
WD	DOWN MAIN (WEST)	C2
NU	UP MAIN (AUCKLAND)	A5
ND	DOWN MAIN	B3

AS DISPLAYED ON SPEED INDICATOR

 ETCS APPROACH SPEED (20 km/h)