

# WESTFIELD

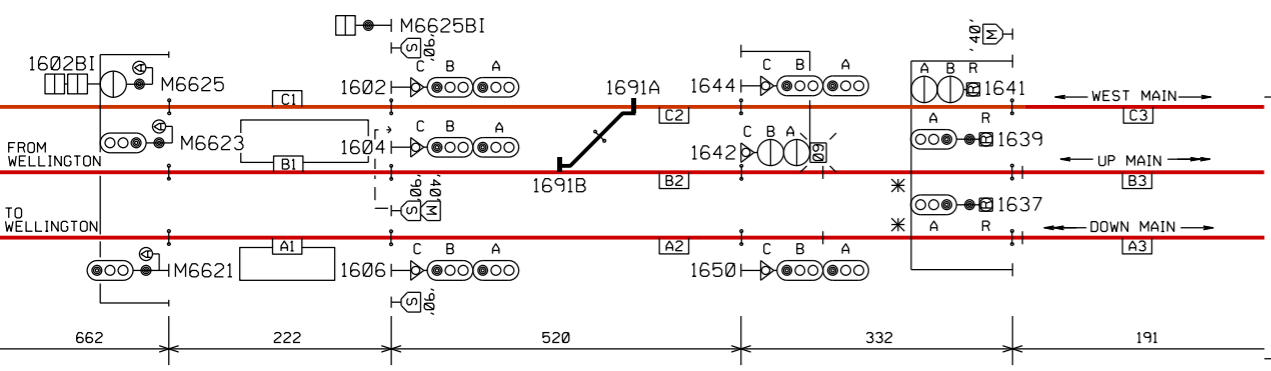
## SIGNALLING & INTERLOCKING ARRANGEMENTS

THESE ARRANGEMENTS WILL BE BROUGHT INTO USE AT A TIME AND DATE TO BE ADVISED BY ALERT.  
THIS CANCELS S&I No. 3452

# THESE TO BE COMPLETED BY THE RECIPIENT OF THE S & I DIAGRAM

UP

MIDDLEMORE WESTFIELD  
STATION LIMITS  
(UP AND DOWN MAINS)



- I AXLE COUNTER
- NB1 NOTICE BOARD: 'DO NOT PASS UNLESS SIGNAL IS AT PROCEED'
- 20 WARNER SIGNAL
- 40 FLASHING SPEED INDICATOR
- D2 'DEPOT LIMITS' SIGN
- D1 'ENTERING DEPOT LIMITS' SIGN MOUNTED ABOVE 'ALL TRAINS STOP' BOARD
- \* TRACK CIRCUIT FOR HRV ON AND OFF TRACKING
- 15 ETCS APPROACH SPEED (15 km/h)
- \* ETCS APPROACH SPEED CALCULATED ON-BOARD APPROXIMATELY 20 km/h
- SIDE WHERE MANUAL CONTROL IS OBTAINED
- DUAL CONTROL POINTS MACHINE WITHIN SLEEPER LIKE CASE
- SIDE WHERE MANUAL CONTROL IS OBTAINED
- 2X CTS2 DUAL CONTROL POINTS MACHINE WITHIN SLEEPER LIKE CASE
- 20 ETCS APPROACH SPEED (20 km/h)
- ⊗ LEVEL CROSSING ALARM CONTROL
- ⊙ INDICATOR DISPLAYS RED OR WHITE 'T'
- CONCRETE STOP BLOCK

NOTE: AXLE COUNTERS INSTALLED EXCEPT AT THE RAIL WELD DEPOT

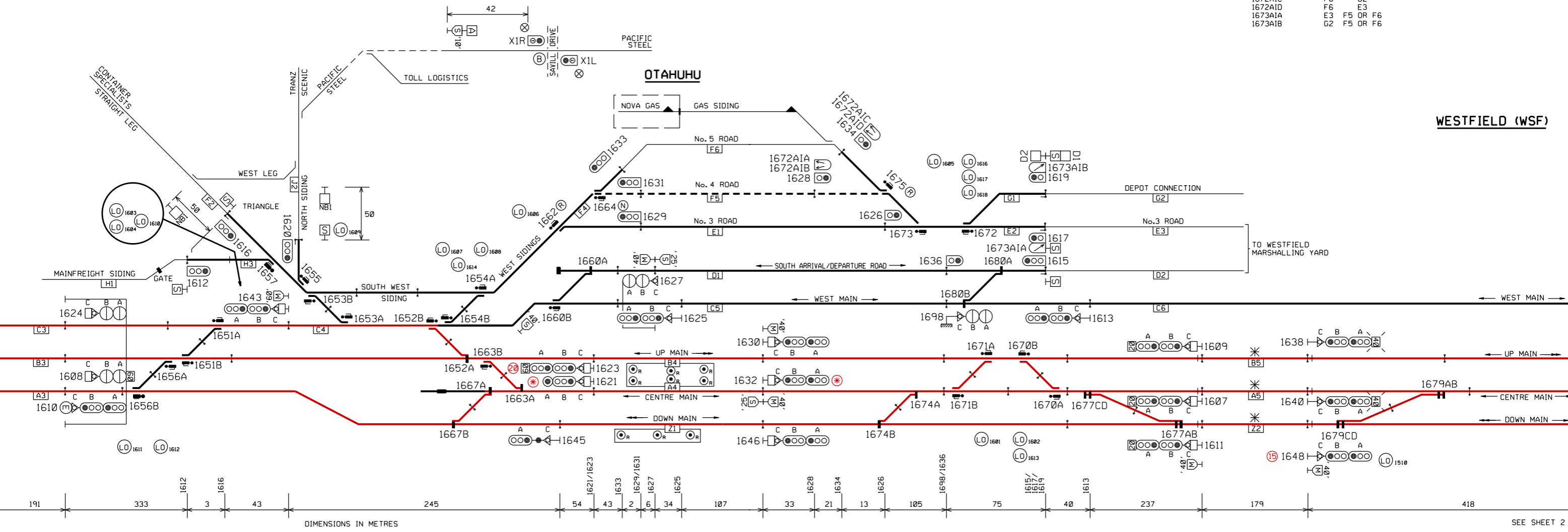
NOTE 1: SPEED INDICATOR ON SIGNAL 1642 WILL DISPLAY A FLASHING MEDIUM SPEED 60 TO SIGNAL 1608 ONLY  
2: SPEED INDICATOR ON SIGNAL 1608 WILL DISPLAY A MEDIUM SPEED 60 TO C4 OR D1  
3: FOR DESCRIPTION OF SIGNALS SEE SHEET 3  
4: FOR DESCRIPTION OF ROUTE INDICATORS SEE SHEET 4  
5: SPEED INDICATOR ON SIGNAL 1638 WILL DISPLAY A FLASHING MEDIUM SPEED 40 TO SIGNAL 1504 ONLY

NOTE: — NO.4 ROAD CLOSED TO ALL SERVICES  
⊙ POINTS LOCKED AND SECURED IN NORMAL  
⊗ POINTS LOCKED AND SECURED IN REVERSE

DESCRIPTION OF 1672 AND 1673 ARROW INDICATORS

WHEN ARROW ILLUMINATED ON	ROUTE SET FROM	TO
1672AIA	F5	G2
1672AIB	F5	E3
1672AIC	F6	G2
1672AID	F6	E3
1673AIA	E3	F5 OR F6
1673AIB	G2	F5 OR F6

SEE S & I DIAGRAM FOR WIRI



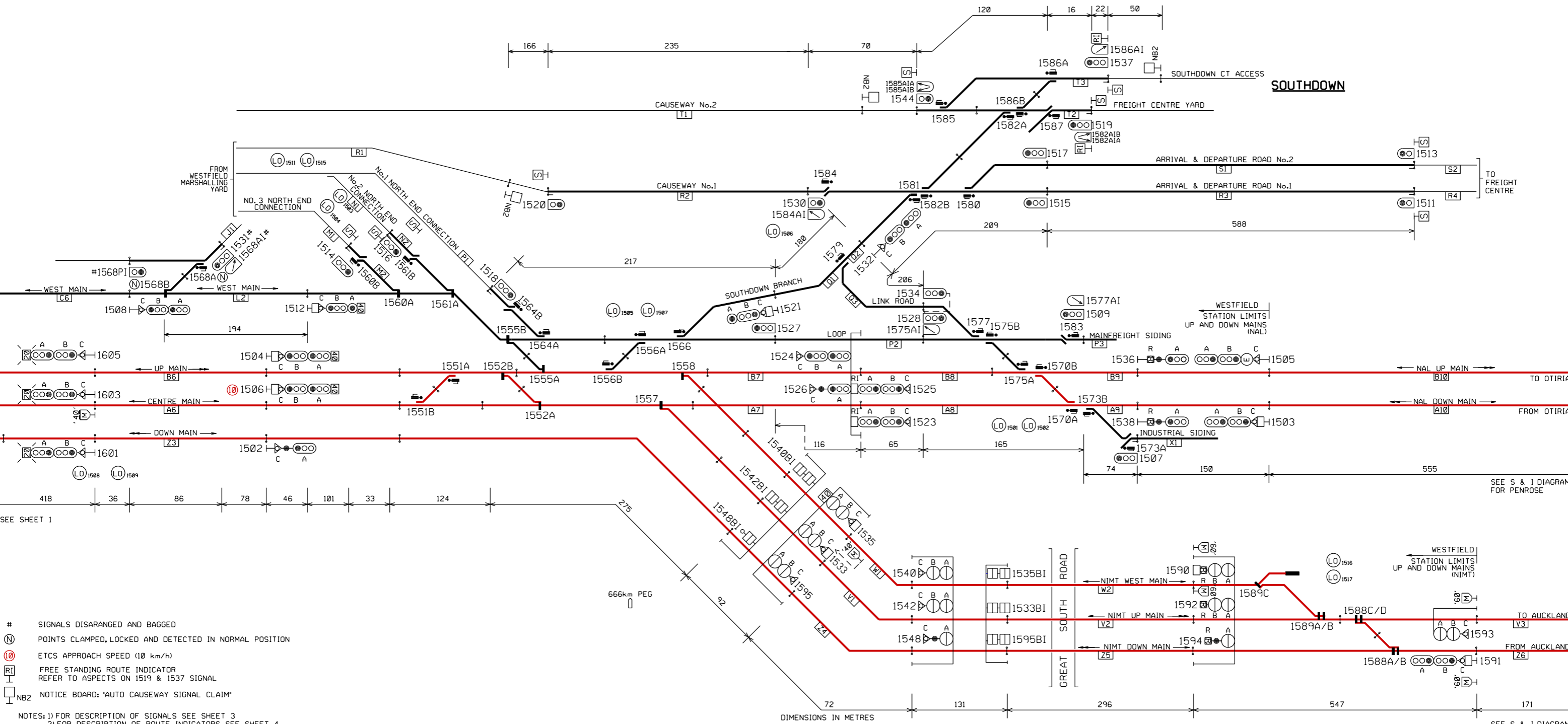
WESTFIELD (WSF)

NOTE: THIS IS A COLOUR DIAGRAM  
RED LINES INDICATE ROUTE AVAILABLE FOR ELECTRIC TRAINS

SEE SHEET 2

## WESTFIELD

### SIGNALLING & INTERLOCKING ARRANGEMENTS



- # SIGNALS DISARRANGED AND BAGGED
- (N) POINTS CLAMPED, LOCKED AND DETECTED IN NORMAL POSITION
- (10) ETCS APPROACH SPEED (10 km/h)
- (RI) FREE STANDING ROUTE INDICATOR REFER TO ASPECTS ON 1519 & 1537 SIGNAL
- (NB2) NOTICE BOARD: "AUTO CAUSEWAY SIGNAL CLAIM"

NOTES: 1) FOR DESCRIPTION OF SIGNALS SEE SHEET 3  
2) FOR DESCRIPTION OF ROUTE INDICATORS SEE SHEET 4

**NOTE: THIS IS A COLOUR DIAGRAM  
RED LINES INDICATE ROUTE AVAILABLE FOR ELECTRIC TRAINS**

PRINTED COPIES OF THIS DOCUMENT ARE UNCONTROLLED

P.R. KING  
SENIOR SIGNALS ENGINEER

# WESTFIELD

## SIGNALLING & INTERLOCKING ARRANGEMENTS

### DESCRIPTION OF SIGNALS

1502AC	UP DIRECTING FROM Z3	NORMAL SPEED TO Z4 LOW SPEED TO Z4	1601ABC	DOWN DIRECTING FROM Z3	NORMAL SPEED TO Z2 # ADVANCE CAUTION WARNER SPEED (20 km/h) 1611 TO B4 OR Z1
1503ABC	DOWN HOME FROM A10	NORMAL SPEED TO A8 MEDIUM SPEED TO B8 OR Q2 LOW SPEED TO A8, B8, P2 OR Q2	1602ABC	UP HOME FROM C1	LOW SPEED TO Z2 NORMAL SPEED TO C2 MEDIUM SPEED TO C2 NORMAL SPEED TO A5
1504ABC	UP DIRECTING FROM B6	NORMAL SPEED TO B7 MEDIUM SPEED TO A7, Q2, V1 OR W1 # CAUTION WARNER SPEED (40 km/h) TO B7 # MEDIUM SPEED (40 km/h) TO A7, V1 OR W1	1603ABC	DOWN DIRECTING FROM A6	# ADVANCE CAUTION WARNER SPEED (20 km/h) 1607 TO B4 OR Z1 MEDIUM SPEED TO Z2 LOW SPEED TO A5 OR Z2 NORMAL SPEED TO B2 LOW SPEED TO B2 OR C2 MEDIUM SPEED TO C2 NORMAL SPEED TO B5
1505ABC	DOWN HOME FROM B10	LOW SPEED TO A7, B7, P2, Q2, V1 OR W1 NORMAL SPEED TO B8 MEDIUM SPEED TO Q2 LOW SPEED TO B8, P2 OR Q2	1604ABC	UP HOME FROM B1	# ADVANCE CAUTION WARNER SPEED (20 km/h) 1609 TO B4 OR Z1 LOW SPEED TO B5 NORMAL SPEED TO A2 LOW SPEED TO A2
1506ABC	UP DIRECTING FROM A6	NORMAL SPEED TO A7 MEDIUM SPEED TO B7, Q2, V1 OR W1 # MEDIUM SPEED (40 km/h) TO V1 LOW SPEED TO A7, B7, P2, Q2, W1 OR V1	1605ABC	DOWN DIRECTING FROM B6	NORMAL SPEED TO A4 MEDIUM SPEED TO B4 OR Z1 # CAUTION MEDIUM SPEED (20 km/h) TO B4 OR Z1 LOW SPEED TO A4, B4 OR Z1 NORMAL SPEED TO B4 MEDIUM SPEED TO A4, C5 OR D1 # MEDIUM SPEED (60 km/h) TO C5 OR D1 TILL THE SLOW BOARD 40 NEAR THE POINT 16608 LOW SPEED TO A4, B4, C5, D1, E1, F5 OR F6 NORMAL SPEED TO B4 MEDIUM SPEED TO A4 OR Z1 # CAUTION WARNER SPEED (20 km/h) TO B4 OR Z1 # ADVANCE CAUTION MEDIUM SPEED (60 km/h) 1623 TO A3 LOW SPEED TO A4, B4 OR Z1
1507	DOWN SHUNT FROM X1	NORMAL SPEED TO L2 LOW SPEED TO J1 OR L2	1606ABC	UP HOME FROM A1	NORMAL SPEED TO Z1 MEDIUM SPEED TO A4, B4, C5 OR D1 LOW SPEED TO A4, B4, C5, D1, E1, F5, F6 OR Z1 NORMAL SPEED TO Z1 MEDIUM SPEED TO A4 OR B4 # CAUTION WARNER SPEED (20 km/h) TO B4 OR Z1 LOW SPEED TO A4, B4 OR Z1
1508ABC	UP DIRECTING FROM C6	LOW SPEED TO P2 OR Q2 LOW SPEED TO R3	1607ABC	DOWN DIRECTING FROM A5	LOW SPEED TO C5 NORMAL SPEED TO C5 LOW SPEED TO C5
1509	DOWN SHUNT FROM P3	LOW SPEED TO P2 OR Q2	1608ABC	UP DIRECTING FROM B3	LOW SPEED TO C5 OR D1 LOW SPEED TO A4, B4, C5, D1, E1, F5 OR F6 MEDIUM SPEED TO B3, A3 OR C4 LOW SPEED TO A3, B3, C4, F2, H3 OR J2 NORMAL SPEED TO B3 MEDIUM SPEED TO A3 OR C4 # MEDIUM SPEED (60 km/h) TO A3 LOW SPEED TO A3, B3, C4, F2, H3 OR J2 NORMAL SPEED TO C5 MEDIUM SPEED TO A4, B4 OR D1 LOW SPEED TO A4, B4, C5, D1, E1, F5, F6 NORMAL SPEED TO C4 LOW SPEED TO C4, F2, H3 OR J2 LOW SPEED TO E2 OR G1 MEDIUM SPEED TO C4 LOW SPEED TO C4, F2, H3 OR J2 LOW SPEED TO E2 OR G1 LOW SPEED TO D2
1511	DOWN SHUNT FROM R4	LOW SPEED TO R3	1609ABC	DOWN DIRECTING FROM B5	LOW SPEED TO C4, F2, H3 OR J2 LOW SPEED TO E2 OR G1 MEDIUM SPEED TO C4 LOW SPEED TO C4, F2, H3 OR J2 LOW SPEED TO E2 OR G1 LOW SPEED TO D2
1512ABC	UP DIRECTING FROM L2	MEDIUM SPEED TO B7, Q2 OR W1 # MEDIUM SPEED (40 km/h) TO W1 OR B7 LOW SPEED TO B7, P2, Q2 OR W1 LOW SPEED TO S1	1610ABC	UP DIRECTING FROM A3	LOW SPEED TO C4, F2, H3 OR J2 LOW SPEED TO E2 OR G1 MEDIUM SPEED TO C4 LOW SPEED TO C4, F2, H3 OR J2 LOW SPEED TO E2 OR G1 LOW SPEED TO D2
1513	DOWN SHUNT FROM S2	LOW SPEED TO B7, P2, Q2 OR W1	1611ABC	DOWN DIRECTING FROM Z2	LOW SPEED TO C4, F2, H3 OR J2 LOW SPEED TO E2 OR G1 MEDIUM SPEED TO C4 LOW SPEED TO C4, F2, H3 OR J2 LOW SPEED TO E2 OR G1 LOW SPEED TO D2
1514	UP SHUNT FROM M1	LOW SPEED TO Q1, Q3 OR R2	1612	UP SHUNT FROM H1	LOW SPEED TO C4, F2, H3 OR J2 LOW SPEED TO E2 OR G1 MEDIUM SPEED TO C4 LOW SPEED TO C4, F2, H3 OR J2 LOW SPEED TO E2 OR G1 LOW SPEED TO D2
1515	DOWN SHUNT FROM R3	LOW SPEED TO B7, P2, Q2 OR W1	1613	DOWN DIRECTING FROM C6	LOW SPEED TO C4, F2, H3 OR J2 LOW SPEED TO E2 OR G1 MEDIUM SPEED TO C4 LOW SPEED TO C4, F2, H3 OR J2 LOW SPEED TO E2 OR G1 LOW SPEED TO D2
1516	UP SHUNT FROM N1	LOW SPEED TO Q1, Q3 OR R2	1615	DOWN SHUNT FROM D2	LOW SPEED TO C4, F2, H3 OR J2 LOW SPEED TO E2 OR G1 MEDIUM SPEED TO C4 LOW SPEED TO C4, F2, H3 OR J2 LOW SPEED TO E2 OR G1 LOW SPEED TO D2
1517	DOWN SHUNT FROM S1	LOW SPEED TO P2 OR Q2	1616	UP SHUNT FROM F2	LOW SPEED TO C4, F2, H3 OR J2 LOW SPEED TO E2 OR G1 MEDIUM SPEED TO C4 LOW SPEED TO C4, F2, H3 OR J2 LOW SPEED TO E2 OR G1 LOW SPEED TO D2
1518	UP SHUNT FROM P1	LOW SPEED TO Q1, Q3, R2 OR T1	1617	DOWN SHUNT FROM E3	LOW SPEED TO C4, F2, H3 OR J2 LOW SPEED TO E2 OR G1 MEDIUM SPEED TO C4 LOW SPEED TO C4, F2, H3 OR J2 LOW SPEED TO E2 OR G1 LOW SPEED TO D2
1519	DOWN SHUNT FROM T2	LOW SPEED TO R2	1619	DOWN SHUNT FROM G2	LOW SPEED TO C4, F2, H3 OR J2 LOW SPEED TO E2 OR G1 MEDIUM SPEED TO C4 LOW SPEED TO C4, F2, H3 OR J2 LOW SPEED TO E2 OR G1 LOW SPEED TO D2
1520	UP SHUNT FROM R1	MEDIUM SPEED TO A6, B6 OR C6 LOW SPEED TO A6, B6, C6, M2, N2 OR P1	1620	UP SHUNT FROM J2	LOW SPEED TO C4, F2, H3 OR J2 LOW SPEED TO E2 OR G1 MEDIUM SPEED TO C4 LOW SPEED TO C4, F2, H3 OR J2 LOW SPEED TO E2 OR G1 LOW SPEED TO D2
1521ABC	DOWN DIRECTING FROM Q1	NORMAL SPEED TO A6 MEDIUM SPEED TO B6 LOW SPEED TO A6 OR B6	1621ABC	DOWN DIRECTING FROM A4	LOW SPEED TO C4, F2, H3 OR J2 LOW SPEED TO E2 OR G1 MEDIUM SPEED TO C4 LOW SPEED TO C4, F2, H3 OR J2 LOW SPEED TO E2 OR G1 LOW SPEED TO D2
1523ABC	DOWN DIRECTING FROM A8	NORMAL SPEED TO B9 MEDIUM SPEED TO A9 LOW SPEED TO A9, B9 OR X1	1623ABC	DOWN DIRECTING FROM B4	LOW SPEED TO C4, F2, H3 OR J2 LOW SPEED TO E2 OR G1 MEDIUM SPEED TO C4 LOW SPEED TO C4, F2, H3 OR J2 LOW SPEED TO E2 OR G1 LOW SPEED TO D2
1524ABC	UP DIRECTING FROM B7	NORMAL SPEED TO B6 MEDIUM SPEED TO A6 OR C6 LOW SPEED TO A6, B6, C6, M2 OR N2	1624ABC	UP DIRECTING FROM C3	LOW SPEED TO C4, F2, H3 OR J2 LOW SPEED TO E2 OR G1 MEDIUM SPEED TO C4 LOW SPEED TO C4, F2, H3 OR J2 LOW SPEED TO E2 OR G1 LOW SPEED TO D2
1525ABC	DOWN DIRECTING FROM B8	NORMAL SPEED TO A9 MEDIUM SPEED TO A9 LOW SPEED TO A9 OR X1	1625ABC	DOWN DIRECTING FROM C5	LOW SPEED TO C4, F2, H3 OR J2 LOW SPEED TO E2 OR G1 MEDIUM SPEED TO C4 LOW SPEED TO C4, F2, H3 OR J2 LOW SPEED TO E2 OR G1 LOW SPEED TO D2
1526AC	UP DIRECTING FROM A7	LOW SPEED TO A9, B9, P3 OR X1 MEDIUM SPEED TO A6, B6 OR C6 # MEDIUM SPEED (40 km/h) TO B6 OR C6 LOW SPEED TO A6, B6, C6, M2 OR N2	1626	UP SHUNT FROM E1	LOW SPEED TO C4, F2, H3 OR J2 LOW SPEED TO E2 OR G1 MEDIUM SPEED TO C4 LOW SPEED TO C4, F2, H3 OR J2 LOW SPEED TO E2 OR G1 LOW SPEED TO D2
1527	DOWN SHUNT FROM P2	NORMAL SPEED TO A9 MEDIUM SPEED TO A9, B9, P3 OR X1 LOW SPEED TO A9, B9, P3 OR X1	1627ABC	DOWN DIRECTING FROM D1	LOW SPEED TO C4, F2, H3 OR J2 LOW SPEED TO E2 OR G1 MEDIUM SPEED TO C4 LOW SPEED TO C4, F2, H3 OR J2 LOW SPEED TO E2 OR G1 LOW SPEED TO D2
1528	UP SHUNT FROM P2	LOW SPEED TO R3, S1, T2 OR T3	1628	UP SHUNT FROM F5	LOW SPEED TO C4, F2, H3 OR J2 LOW SPEED TO E2 OR G1 MEDIUM SPEED TO C4 LOW SPEED TO C4, F2, H3 OR J2 LOW SPEED TO E2 OR G1 LOW SPEED TO D2
1530	UP SHUNT FROM R2	LOW SPEED TO C6	1629	DOWN SHUNT FROM E1	LOW SPEED TO C4, F2, H3 OR J2 LOW SPEED TO E2 OR G1 MEDIUM SPEED TO C4 LOW SPEED TO C4, F2, H3 OR J2 LOW SPEED TO E2 OR G1 LOW SPEED TO D2
1531	DOWN SHUNT FROM J1	NORMAL SPEED TO R3 MEDIUM SPEED TO S1 LOW SPEED TO R3, S1, T2 OR T3	1630ABC	UP DIRECTING FROM B4	LOW SPEED TO C4, F2, H3 OR J2 LOW SPEED TO E2 OR G1 MEDIUM SPEED TO C4 LOW SPEED TO C4, F2, H3 OR J2 LOW SPEED TO E2 OR G1 LOW SPEED TO D2
1532ABC	UP DIRECTING FROM Q2	LOW SPEED TO C6	1631	DOWN SHUNT FROM F5	LOW SPEED TO C4, F2, H3 OR J2 LOW SPEED TO E2 OR G1 MEDIUM SPEED TO C4 LOW SPEED TO C4, F2, H3 OR J2 LOW SPEED TO E2 OR G1 LOW SPEED TO D2
1533ABC	DOWN DIRECTING FROM V1	NORMAL SPEED TO R3 MEDIUM SPEED TO S1 LOW SPEED TO R3, S1, T2 OR T3	1632ABC	UP DIRECTING FROM A4	LOW SPEED TO C4, F2, H3 OR J2 LOW SPEED TO E2 OR G1 MEDIUM SPEED TO C4 LOW SPEED TO C4, F2, H3 OR J2 LOW SPEED TO E2 OR G1 LOW SPEED TO D2
1534	UP SHUNT FROM Q3	MEDIUM SPEED TO A6 OR B6 LOW SPEED TO A6 OR B6	1633	DOWN SHUNT FROM F6	LOW SPEED TO C4, F2, H3 OR J2 LOW SPEED TO E2 OR G1 MEDIUM SPEED TO C4 LOW SPEED TO C4, F2, H3 OR J2 LOW SPEED TO E2 OR G1 LOW SPEED TO D2
1535ABC	DOWN DIRECTING FROM W1	LOW SPEED TO A9, B9, P3 OR X1 MEDIUM SPEED TO A6, B6 OR C6 # MEDIUM SPEED (40 km/h) TO B6 OR C6 LOW SPEED TO A6, B6, C6, M2 OR N2	1634	UP SHUNT FROM F6	LOW SPEED TO C4, F2, H3 OR J2 LOW SPEED TO E2 OR G1 MEDIUM SPEED TO C4 LOW SPEED TO C4, F2, H3 OR J2 LOW SPEED TO E2 OR G1 LOW SPEED TO D2
1536AR	UP DEPARTURE FROM B9	NORMAL SPEED TO B10 RESTRICTED SPEED TO B10	1636	UP SHUNT FROM D1	LOW SPEED TO C4, F2, H3 OR J2 LOW SPEED TO E2 OR G1 MEDIUM SPEED TO C4 LOW SPEED TO C4, F2, H3 OR J2 LOW SPEED TO E2 OR G1 LOW SPEED TO D2
1537	DOWN SHUNT FROM T3	LOW SPEED TO Q1, Q3, R2 OR T1	1637AR	DOWN DEPARTURE FROM A3	LOW SPEED TO C4, F2, H3 OR J2 LOW SPEED TO E2 OR G1 MEDIUM SPEED TO C4 LOW SPEED TO C4, F2, H3 OR J2 LOW SPEED TO E2 OR G1 LOW SPEED TO D2
1538AR	UP DEPARTURE FROM A9	NORMAL SPEED TO A10 RESTRICTED SPEED TO A10	1638ABC	UP DIRECTING FROM B5	LOW SPEED TO C4, F2, H3 OR J2 LOW SPEED TO E2 OR G1 MEDIUM SPEED TO C4 LOW SPEED TO C4, F2, H3 OR J2 LOW SPEED TO E2 OR G1 LOW SPEED TO D2
1540ABC	UP DIRECTING FROM W1	NORMAL SPEED TO W2 LOW SPEED TO W2	1639AR	DOWN DEPARTURE FROM B3	LOW SPEED TO C4, F2, H3 OR J2 LOW SPEED TO E2 OR G1 MEDIUM SPEED TO C4 LOW SPEED TO C4, F2, H3 OR J2 LOW SPEED TO E2 OR G1 LOW SPEED TO D2
1542ABC	UP DIRECTING FROM V1	NORMAL SPEED TO V2 LOW SPEED TO V2	1640ABC	UP DIRECTING FROM A5	LOW SPEED TO C4, F2, H3 OR J2 LOW SPEED TO E2 OR G1 MEDIUM SPEED TO C4 LOW SPEED TO C4, F2, H3 OR J2 LOW SPEED TO E2 OR G1 LOW SPEED TO D2
1544	UP SHUNT FROM T1	LOW SPEED TO T2 OR T3	1641ABR	DOWN DEPARTURE FROM C3	LOW SPEED TO C4, F2, H3 OR J2 LOW SPEED TO E2 OR G1 MEDIUM SPEED TO C4 LOW SPEED TO C4, F2, H3 OR J2 LOW SPEED TO E2 OR G1 LOW SPEED TO D2
1548AC	UP DIRECTING FROM Z4	NORMAL SPEED TO Z5 LOW SPEED TO Z5	1642ABC	UP DIRECTING FROM B2	LOW SPEED TO C4, F2, H3 OR J2 LOW SPEED TO E2 OR G1 MEDIUM SPEED TO C4 LOW SPEED TO C4, F2, H3 OR J2 LOW SPEED TO E2 OR G1 LOW SPEED TO D2
1590ABR	UP DEPARTURE FROM W2	MEDIUM SPEED TO V3 OR Z6 RESTRICTED SPEED TO V3 OR Z6	1643ABC	DOWN DIRECTING FROM C4	LOW SPEED TO C4, F2, H3 OR J2 LOW SPEED TO E2 OR G1 MEDIUM SPEED TO C4 LOW SPEED TO C4, F2, H3 OR J2 LOW SPEED TO E2 OR G1 LOW SPEED TO D2
1591ABC	DOWN HOME FROM Z6	RESTRICTED SPEED TO Z4 NORMAL SPEED TO Z4 LOW SPEED TO V1, W1 OR W4 MEDIUM SPEED TO V1 OR W1	1644ABC	UP DIRECTING FROM C2	LOW SPEED TO C4, F2, H3 OR J2 LOW SPEED TO E2 OR G1 MEDIUM SPEED TO C4 LOW SPEED TO C4, F2, H3 OR J2 LOW SPEED TO E2 OR G1 LOW SPEED TO D2
1592ABR	UP DEPARTURE FROM V2	RESTRICTED SPEED TO V3 OR Z6 MEDIUM SPEED TO Z6 RESTRICTED SPEED TO V3 OR Z6	1645AC	DOWN DIRECTING FROM Z1	LOW SPEED TO C4, F2, H3 OR J2 LOW SPEED TO E2 OR G1 MEDIUM SPEED TO C4 LOW SPEED TO C4, F2, H3 OR J2 LOW SPEED TO E2 OR G1 LOW SPEED TO D2
1593ABC	DOWN HOME FROM V3	NORMAL SPEED TO V1 MEDIUM SPEED TO W1 LOW SPEED TO V1 OR W1	1646ABC	UP DIRECTING FROM Z1	LOW SPEED TO C4, F2, H3 OR J2 LOW SPEED TO E2 OR G1 MEDIUM SPEED TO C4 LOW SPEED TO C4, F2, H3 OR J2 LOW SPEED TO E2 OR G1 LOW SPEED TO D2
1594AR	UP DEPARTURE FROM Z5	NORMAL SPEED TO Z6 RESTRICTED SPEED TO Z6	1648ABC	UP DIRECTING FROM Z2	LOW SPEED TO C4, F2, H3 OR J2 LOW SPEED TO E2 OR G1 MEDIUM SPEED TO C4 LOW SPEED TO C4, F2, H3 OR J2 LOW SPEED TO E2 OR G1 LOW SPEED TO D2
1595ABC	DOWN DIRECTING FROM Z4	NORMAL SPEED TO Z3 LOW SPEED TO Z3	1650ABC	UP DIRECTING FROM A2	LOW SPEED TO C4, F2, H3 OR J2 LOW SPEED TO E2 OR G1 MEDIUM SPEED TO C4 LOW SPEED TO C4, F2, H3 OR J2 LOW SPEED TO E2 OR G1 LOW SPEED TO D2

# AS DISPLAYED ON SPEED INDICATOR

# WESTFIELD

## SIGNALLING & INTERLOCKING ARRANGEMENTS

### DESCRIPTION OF ROUTE INDICATORS

SIGNAL	DISPLAY	DISPLAY DESCRIPTION
1503	D	NAL DOWN MAIN
	U	NAL UP MAIN
	F	AUCKLAND FREIGHT BRANCH
	L	LOOP LINE

SIGNAL	DISPLAY	DISPLAY DESCRIPTION
1504	D1	NAL DOWN MAIN
	U1	NAL UP MAIN
	U2	NIMT UP MAIN
	W	NIMT WEST MAIN
	L	LOOP LINE
	F	AUCKLAND FREIGHT BRANCH

SIGNAL	DISPLAY	DISPLAY DESCRIPTION
1506	D1	NAL DOWN MAIN
	U1	NAL UP MAIN
	U2	NIMT UP MAIN
	W	NIMT WEST MAIN
	L	LOOP LINE
	F	AUCKLAND FREIGHT BRANCH

SIGNAL	DISPLAY	DISPLAY DESCRIPTION
1512	U1	NAL UP MAIN
	L	LOOP LINE
	F	AUCKLAND FREIGHT BRANCH
	W	NIMT WEST MAIN

SIGNAL	DISPLAY	DISPLAY DESCRIPTION
1519	M	MAIN
	L	LINK
	1	CAUSEWAY 1
	2	CAUSEWAY 2

SIGNAL	DISPLAY	DISPLAY DESCRIPTION
1521	C	NIMT CENTRE MAIN
	U	NIMT UP MAIN
	Y1	NO.1 NORTH END CONNECTION
	Y2	NO.2 NORTH END CONNECTION
	Y3	NO.3 NORTH END CONNECTION
	W	NIMT WEST MAIN

SIGNAL	DISPLAY	DISPLAY DESCRIPTION
1523	C	NIMT CENTRE MAIN
	U	NIMT UP MAIN

SIGNAL	DISPLAY	DISPLAY DESCRIPTION
1525	C	NIMT CENTRE MAIN
	U	NIMT UP MAIN
	Y2	NO.2 NORTH END CONNECTION
	Y3	NO.3 NORTH END CONNECTION
	W	NIMT WEST MAIN

SIGNAL	DISPLAY	DISPLAY DESCRIPTION
1533	C	NIMT CENTRE MAIN
	U	NIMT UP MAIN

SIGNAL	DISPLAY	DISPLAY DESCRIPTION
1535	C	NIMT CENTRE MAIN
	U	NIMT UP MAIN
	Y2	NO. 2 NORTH END CONNECTION
	Y3	NO. 3 NORTH END CONNECTION
	W	NIMT WEST MAIN

SIGNAL	DISPLAY	DISPLAY DESCRIPTION
1537	M	MAIN
	L	LINK
	1	CAUSEWAY 1
	2	CAUSEWAY 2

SIGNAL	DISPLAY	DISPLAY DESCRIPTION
1590	U	NIMT UP MAIN
	D	NIMT DOWN MAIN

SIGNAL	DISPLAY	DISPLAY DESCRIPTION
1591	D	NIMT DOWN MAIN
	U	NIMT UP MAIN
	W	NIMT WEST MAIN

SIGNAL	DISPLAY	DISPLAY DESCRIPTION
1607	D	NIMT DOWN MAIN
	U	NIMT UP MAIN
	C	NIMT CENTRE MAIN

SIGNAL	DISPLAY	DISPLAY DESCRIPTION
1608	D	NIMT DOWN MAIN
	U	NIMT UP MAIN
	C	NIMT CENTRE MAIN
	W	NIMT WEST MAIN
	S	SOUTH ARRIVAL/DEPARTURE ROAD
	S3	NO.3 ROAD
	S4	NO. 4 ROAD
	S5	NO. 5 ROAD

SIGNAL	DISPLAY	DISPLAY DESCRIPTION
1609	D	NIMT DOWN MAIN
	U	NIMT UP MAIN
	C	NIMT CENTRE MAIN

SIGNAL	DISPLAY	DISPLAY DESCRIPTION
1611	D	NIMT DOWN MAIN
	U	NIMT UP MAIN
	C	NIMT CENTRE MAIN

SIGNAL	DISPLAY	DISPLAY DESCRIPTION
1621	D	NIMT DOWN MAIN
	U	NIMT UP MAIN
	W	UP WEST ARRIVAL ROAD
	S	SIDINGS

SIGNAL	DISPLAY	DISPLAY DESCRIPTION
1623	D	NIMT DOWN MAIN
	U	NIMT UP MAIN
	W	UP WEST ARRIVAL ROAD
	S	SIDINGS

SIGNAL	DISPLAY	DISPLAY DESCRIPTION
1624	U	NIMT UP MAIN
	C	NIMT CENTRE MAIN
	W	NIMT WEST MAIN
	Y	SOUTH ARRIVAL / DEPARTURE ROAD
	S3	No.3 ROAD
	S4	No.4 ROAD
	S5	No.5 ROAD

SIGNAL	DISPLAY	DISPLAY DESCRIPTION
1630	D	NIMT DOWN MAIN
	U	NIMT UP MAIN
	C	NIMT CENTRE MAIN

SIGNAL	DISPLAY	DISPLAY DESCRIPTION
1632	D	NIMT DOWN MAIN
	U	NIMT UP MAIN
	C	NIMT CENTRE MAIN

SIGNAL	DISPLAY	DISPLAY DESCRIPTION
1643	D	NIMT DOWN MAIN
	U	NIMT UP MAIN
	W	NIMT WEST MAIN

SIGNAL	DISPLAY	DISPLAY DESCRIPTION
1646	D	NIMT DOWN MAIN
	U	NIMT UP MAIN
	C	NIMT CENTRE MAIN